



# INNER FORTH LANDSCAPE INITIATIVE

## PROJECT OVERVIEW

The IFLI vision was for the natural, cultural and historical wealth of the area to be revealed, valued, enhanced, and made accessible both to the people who live here and to visitors.

“ It’s about conserving, enhancing and celebrating this unique and special landscape. We want people to know about this place and feel pride in having it, knowing about its importance for wildlife and cultural heritage. ”

*Kate Studd, IFLI Programme Manager*

## CSGN CASE STUDY:

### INNER FORTH LANDSCAPE INITIATIVE

The Inner Forth Landscape Initiative (IFLI) was a Heritage Lottery Funded Landscape Partnership Scheme focusing on the upper Firth of Forth and ran between 2012 and 2018. IFLI covered an area of 202 km<sup>2</sup> including: the river, estuary and inter-tidal zone; the floodplain and coastal margins; and the settlements on both sides of the Forth from the historic Old Stirling Bridge to Blackness Castle and Rosyth.

IFLI became the first CSGN Flagship project in 2013, after being recognised for its contribution to a wide number of CSGN aims and objectives, from landscape-scale climate action to community-focused education, skills and training.

To deliver these, 54 discrete but inter-related projects were developed and delivered. They spanned the whole area and many directly contributed towards the development of the CSGN.

For example, active travel and access routes were created and upgraded, encouraging more people to cycle and walk around the area. Habitats were restored for people and wildlife, establishing climate mitigation and adaptation interventions. New community growing facilities were established and skills, training and volunteering opportunities were created for both formal and informal learning.

Image credit: David Palmar, photoscot.co.uk



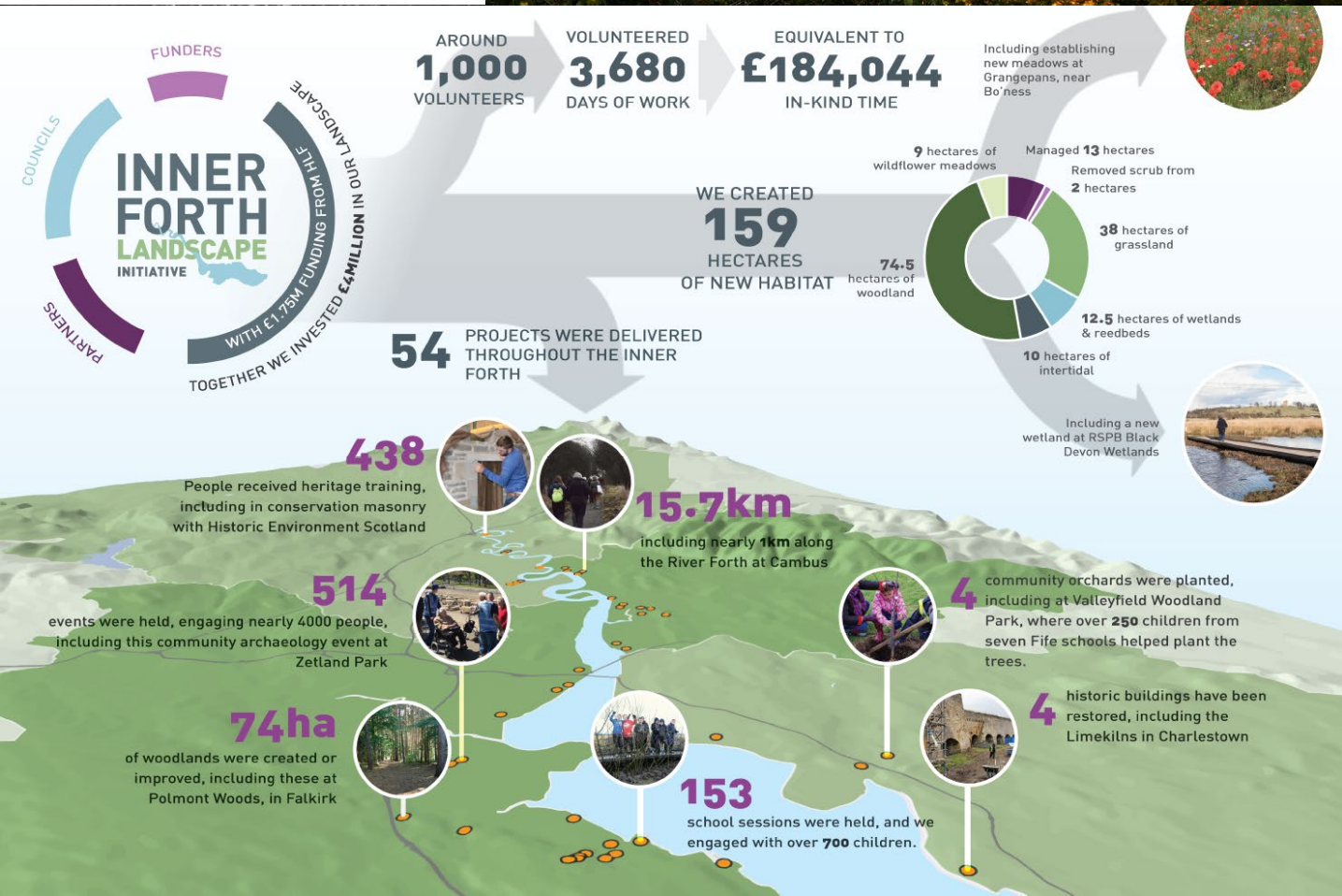
## PROJECT AIMS

These fell into four themes that resonate strongly with the CSGN's ambitions:

- Conserving and restoring the built and natural heritage features that define the Inner Forth Landscape
- Increasing community participation in our local heritage
- Increasing access to the landscape and learning about its heritage
- Increasing training and development opportunities in heritage skills

## PROJECT OUTCOMES

(source: Inner Forth Landscape Initiative)







Central Scotland Green Network

## LEGACY AND THE FUTURE

Since 2019, the partnership has continued to work together, reaffirming their commitment to regenerating the Inner Forth, and have expanded with Fife Council becoming a formal member. Other organisations such as SEPA and Forth Environment Link have become informal partners.

The new focus is Climate FORTH, an initiative aiming to use the area's unique heritage to support a 'just transition' in the face of climate change.

## PARTNERS

The Inner Forth Partnership have been working together since 2008, initially looking at small-scale habitat restoration projects along the Forth. Since then, the partnership has grown stronger and more committed to delivering real change in the Inner Forth area.

The formal partnership originally involved:

- Three local authorities: Stirling, Clackmannanshire and Falkirk Councils
- Two public bodies: Scottish Natural Heritage (now NatureScot) and Historic Environment Scotland
- Three NGOs: RSPB Scotland, Sustrans and the Central Scotland Green Network Trust (now the Green Action Trust)

During the delivery of the IFLI, a range of other organisations, groups and individuals became informal partners and supported the delivery of the projects. These included other NGOs and many community groups.

